



qMGR

qSIM

qBOX

qPOST

qOPS





OT-POST REEVALUATES ALL TESTING RESULTS TO BETTER CONTROL THE QUALITY AND HEALTH OF ALL FACETS OF YOUR TESTING OPERATIONS. OT-POST PERFORMS CROSS-QUALITY EVALUATIONS OF THE ENTIRE TESTING FLEET AND ALL DEVICE TEST TIME AND YIELD, OFFERING EXTREME DATA-INTEGRITY. FURTHERMORE, OT-POST AUGMENTS PRODUCT RELIABILITY THROUGH PAT AND OTHER ADVANCED OUTLIER DETECTION TECHNIQUES.

#### **OT-POST – COMPREHENSIVE POST-TESTING MANAGEMENT**

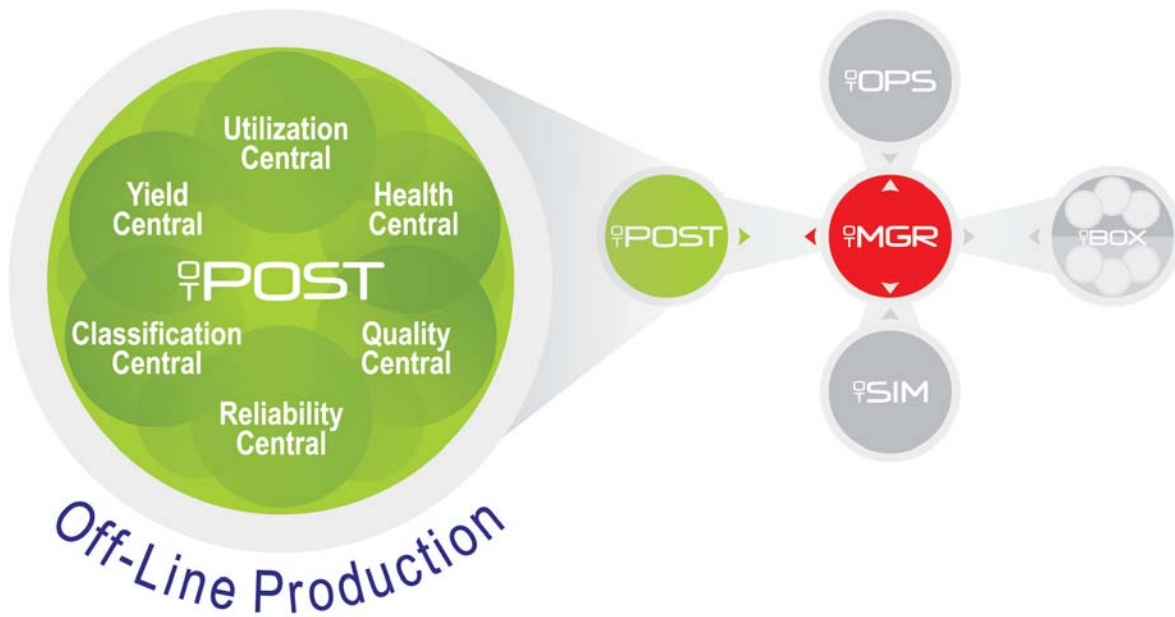
Although recognized as a key factor in raising yields, quality and end-product reliability, post-production testing is carried out through homegrown solutions which are often unvalidated, uncontrolled, and in some cases contain conflicting scripts. Post-testing rules, if they exist, cover only basic PAT and health control. And, many post-production operations are undocumented and are often hard-coded into system equipment - lacking the flexibility and scalability demanded by today's testing standards.

Test professionals need a new paradigm in post-production testing. They need new tools that add comprehensive data integrity and provide a rich, structured rule-set language.

Through execution of advanced off-line rule sets, OT-Post reevaluates testing results and then dispositions them accordingly. OT-Post improves device reliability using a rich array of reliability rules, and delivers the highest testing quality through cross-SPC health control comparison of devices, test-fleet and test processes. The end result – enhanced visibility for testing results and fleet health, and insight into the entire testing process.

Test Time Reduction  
Utilization  
Yield Quality  
Reliability

## EXCELLING IN POST-PRODUCTION TEST



### OT-POST BENEFITS:

**ENHANCED RELIABILITY** - OT-Post enhances device reliability through a rich array of reliability augmentation rules, including PAT, advanced outlier detection, and other sophisticated reliability algorithms. These can be validated to catch reliability fallout at the current socket rather than the next socket, decreasing next socket capacity demands like burn-in capacity, and increasing overall product reliability.

**BETTER END-MARKET CLASSIFICATION** - OT-Post helps better categorize and cherry-pick your devices for the right marketing niches or create the right combination of devices within a Multi-Chip-Package (MCP) device for targeted markets.

**CROSS-QUALITY HEALTH CONTROL** - OT-Post offers improved health control through rich and unique SPC comparison of:

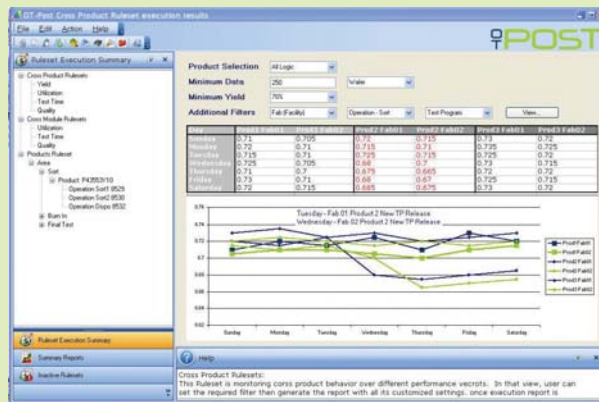
- **Processes** – OT-Post detects non-optimized processes through lithography, defects, e-test parameters and other unique SPC criteria for highest yields and best process operation windows.
- **Devices** – OT-Post detects non-optimized device testing processes and related characteristics, helping align all devices to a baseline, and controlling yield, retest/resort rates, and real-time rules.
- **Test Fleet** - OT-Post detects outlier test equipment through rich SPC rules, seeking out equipment outliers, trends, marginalities and freezes – and baselining your fleet at highest standards.
- **Test Process** - OT-Post detects critical parameters like correlation/standards pass rate, run rate, performance and OEE. OT-Post also detects die gain and bin switching control resulting from retest/resort - across all SPC rule types for best process optimization.

**IMPROVED GATEKEEPING** - OT-Post detects test data integrity issues and human errors from a yield and shipping perspective, including verification that material was processed with intended criteria (test program, post processing rule, disposition rules, etc).

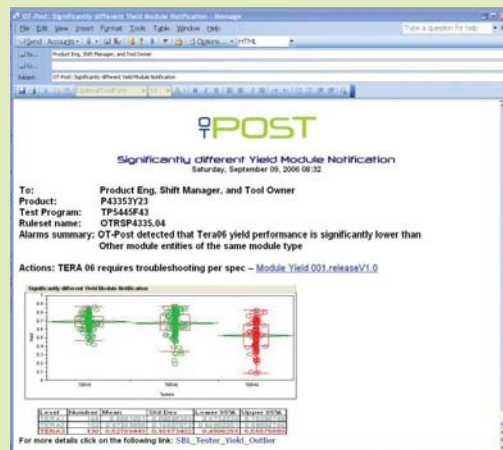
**DYNAMIC DISPOSITION** - Rules triggered by bins or parameters that are normally executed in real-time are executed in off-line mode by OT-Post for analysis and material disposition purposes. The actions may invoke a variety of disposition criteria such as - resort/retest, hold, scrap, tag for burn-in, inking, etc.

## A CLOSER LOOK AT THE OT-POST USER INTERFACE

OT-Post: Rule-Set Execution Results Manager - Where User Can View All Rule Execution Status and Findings



OT-Post: Module Outlier Email Notification Alarm - With Problem Description, Details and Recommended Actions



OT-Post: PAT E-mail Notification - With Problem Description, Details and Recommended Actions

